

# TSW200



TSW200 360° VIEW

## PoE+ GIGABIT ETHERNET SWITCH

// TSW200 is industrial unmanaged switch from Teltonika Networks.

// TSW200 is equipped with 2 SFP ports for long-range Fiber-optic communication and 8 Gigabit Ethernet ports which support IEEE802.3af and IEEE802.3at Power-over-Ethernet standards.

// Classified as power source equipment (PSE), it enables centralization of the power supply, providing up to 30 watts per port and reducing the effort for installing power. It has 10/100/1000 Mbps Ethernet ports to provide an economical high-bandwidth solution for your industrial Ethernet network.

// This rugged unmanaged industrial switch is ideal for professional high bandwidth applications where it is necessary to provide both: reliable data connection and power supply.



### SFP

2 x SFP ports for long-range Fiber-optic communication

### PoE+

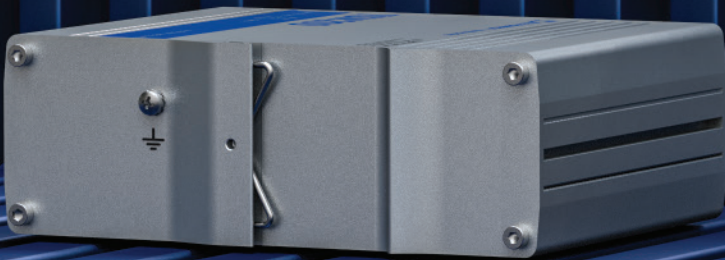
8 x PoE ports with 802.af, 802.3at standard support

### POWER BUDGET

Total power budget at PSE up to 240 W

### ETHERNET

8 x Gigabit Ethernet with speeds up to 1000 Mbps



# KEY FEATURES

## HARDWARE

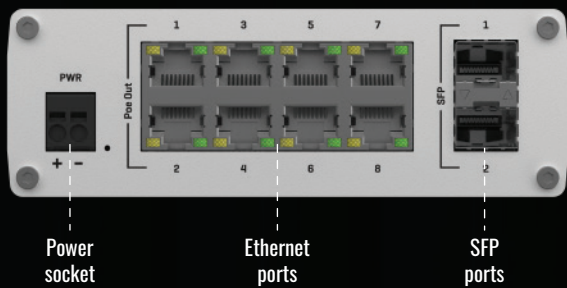
Powering option	2 pin, push-in, terminal block
Input voltage range	7-57 VDC
Input voltage range for PoE	44-57 VDC
Power consumption	Idle: < 2 W, Max: < 9 W (no PoE device connected)
PoE standard	802.3af/at (up to 30 W per port, total power budget - 240 W)
Ethernet	8 x 10/100/1000 Mbps Ethernet ports
SFP	2 x SFP port for Optical interface
Status LEDs	16 x Ethernet, 1 x Power, 2 x SFP activity
Ingress protection rating	IP30
Operating temperature	-40 °C to 75 °C
Housing	Aluminium housing with wall or DIN rail mounting option and grounding capability
Dimensions	132 x 44.2 x 95.1 mm
Weigh	456 g
Installation	Desktop, wall or DIN Rail mountable (additional kit needed)

\*PoE operates properly only when connected power supply outputs 44 V or higher voltage

## PERFORMANCE SPECIFICATIONS

Bandwidth	20 Gbps
Packet buffer	128 KB
Jumbo frame support	9216 bytes
MAC address table size	2K entries
Auto MDI/ MDI-X Cable Detection	Yes

### FRONT VIEW



### BACK VIEW

